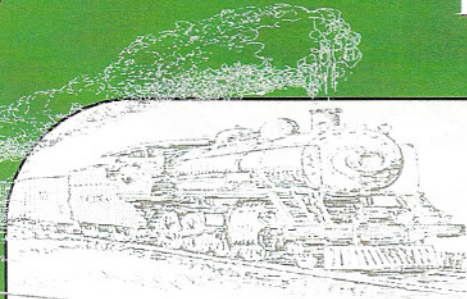


THE BRICK STREET BULLETIN

~ MARCH 2011 ~



The Newsletter of the Osgood Public Library

Osgood Book Club

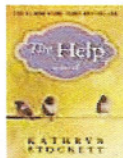
The Osgood Library Book Club has chosen its books. The Club will meet at 6:00 p.m. on Thursdays. Stop in at the library to pick up your copy of the book for discussion

- April 7
- **Loving Frank**
- By: Nancy Horan



In the rolling hills of southern Indiana, an elderly couple copes with the fear that their river-bottom farm-the only home they've ever known-will be taken from them through an act of eminent domain. The river flowing through their land, the current the old man has fished nearly every day of his life, may be dammed to form a reservoir. Their son, slipping deeper into troubles of his own, struggles to define his place both in a new romantic relationship and in the family heritage. This beautiful and heartfelt debut novel examines what it means to love a place and a family, and the sometimes-staggering cost of that affection.

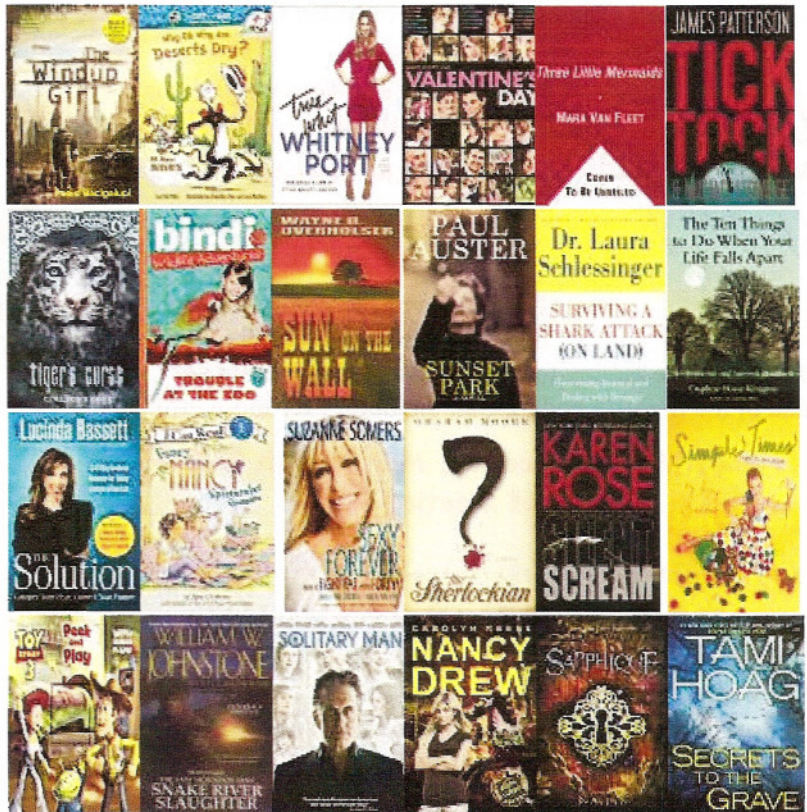
- May 5
- **The Help**
- By: Kathryn Stockett



Library Hours

Monday and Thursdays 10am-7pm
Tuesdays and Wednesdays 10am-6pm
Friday 10am - 5pm
Saturdays 10am - 2pm

Recent Additions



Find the link for **INSPIRE** on our website at www.osgoodlibrary.org

What is INSPIRE?

INSPIRE is Indiana's Virtual Library. INSPIRE is a collection of academic databases and other information resources that can be accessed by Indiana residents using any computer equipped with an Internet Protocol (IP) address located in Indiana and a Web browser such as Firefox or Internet Explorer.

INSPIRE began in January 1998 as a partnership between the Indiana State Library and the Indiana Cooperative Library Services Authority (INCOLSA), along with a one-time grant from the Lilly Endowment Inc. which funded the SiteSearch software and its subsequent development. Additionally, LSTA (Library Services and Technology Act) funding is used for administration costs.

Perennial Exchange

Starting April 25th at Osgood & Milan

Is your perennial flowerbed getting too crowded?

Divide your plants and bring the extras to the library for the Perennial

Exchange. Take home a new plant to add to your gardens. The plants will be in the vestibule of the Osgood & Milan Libraries. Please bring plants in some kind of container and identify the plant you are bringing to EXCHANGE.

For more info. call Osgood: 689-4011 or Milan 654-1963



Visit us on the web!

www.osgoodlibrary.org

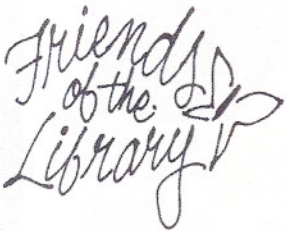
Gently used books are graciously accepted.

Please contact the library to arrange a donation.

Want to make a difference @ your Library?

Join the Friends.

What do the Friends of the Library do?



The friends of the library help to make the library a nicer place to visit. They raise money for programs and equipment not available in the library's budget. Call the library for more info!

Next Friends Meeting Monday, March 14th @ 5:30 p.m. - Osgood Meeting Room

Osgood Public Library

Main Library 136 W. Ripley St. Osgood, IN 47037 812-689-4011	Milan Branch 112 Franklin St. Milan, IN 47031 812-654-1963
--	--

Story Time

Dr. Seuss' Birthday Party

Osgood - March 3rd 1 & 4 pm

St. Patrick's Day - Wear Green!

Milan - March 15th 1 & 4pm

Osgood - March 17th 1 & 4pm

Superhero

Milan - March 29th 1 & 4pm

Osgood - March 31st 11am

Do you have a musical talent that you would like share with the community. The Osgood Public Library and Milan Branch Library are currently looking for local talent. If you are one of these people please contact Kerry. You could perform at the library and let your talent be heard or seen!



	Friends of the Library Book Sale coming in April
--	---

Prom Beauty Tips

March 26th @ 11am



Hairstylist Joyce Samples and Mary Kay Representative, Cathy Pratt, will be at the Osgood Library to show you how to wear your hair and apply makeup for the special event. Refreshments will be served and a door prize. Registration preferred but not required.

The Library Board of Trustees

Meet on March 29th @ 6pm

Osgood Public Library

The Public is Welcome